

Career Chronicle

Spring Into Your Job Search! Graduation is Just Around the Corner

Volume IV,
Issue IV

January 2005
Editor:
Ellen Steichen

With one more semester down, we are one step closer to graduation day, whether that day be in 2005 or 2008. Seniors, I know many of you feel like hyperventilating, but don't. Career Services has several resources that you can take advantage of this semester to help you find a job, get interviews, and prepare you for the "real world." And for you freshman, sophomores, and juniors, do yourself a favor and avoid a nervous breakdown senior year by taking initiative now. Don't wait to start your job search. Remember, there is life after SLU, and the moves you take now could help you get a great start on the road to a successful career after graduation.

Every student is encouraged to come by our office or call to make an appointment with a career counselor or peer advisor. In this meeting you can get help writing a

resume, discuss your career goals and objectives, get advice on a job search strategy, or participate in a mock interview to prepare you for the real thing.

For those of you still deciding on a major or if you are having doubts about the current program that you are in, our staff can offer you invaluable advice. By visiting our office, you will also have the opportunity to complete assessments that examine your skills, interests, and personality to give you insight and direction toward a career or field in which you would succeed and enjoy.

All of these resources are here for you, so take advantage of them while you can. Read further in this issue for information about the spring career fair, on-campus recruiting, and other special events hosted by Career Services.

Spring Career Fair Coming Soon

Interested in finding a full or part time job? Does an internship with a professional company or organization sound appealing? Or maybe you're weighing your options and considering graduate school. No matter what your future plans are, make sure to mark your calendar for the spring career fair hosted by Career Services. The event will take place on Thursday, February 3 from 2-6

p.m. and will be held at the Busch Student Center in the multipurpose room on the lower level.

Representatives from several companies and organizations will be available to discuss opportunities that may be available to you, whether they be internship or co-op positions or full-time employment.

continued on page 2...

Inside this issue:

Spring Into Your Job Search	1
Spring Career Fair	2
Career Fair Tips	2-3
List of Career Fair Attendees	4

Upcoming Events

- ◆ Spring Career Fair
Thursday, February 3
Busch Student Center
2-6 p.m.
- ◆ On-Campus Recruiting
Interviews Begin
Friday, February 4
- ◆ Road Trip Nation
Tuesday, March 22



SAINT LOUIS UNIVERSITY

Career Fair cont...

More than 170 organizations have registered to attend the fair. Participants are coming from a wide range of organizations. Attendees include corporations like Anheuser-Busch and Boeing as well as non-profits such as Project ARK and the Hopewell Center. Representatives will also be present from several universities offering information about their graduate school programs. Even if you are just looking for a temporary position or summer job, come see what opportunities are available for you.

To view a full list of participants, visit our website: <http://careers.slu.edu>. Once there, click on the tab that says “students” on the top of the page. You will see a headline announcing the career fair and a link that will allow you to view the registrants. This detailed list will also provide you with useful information to help prepare yourself for the day of the event.



Career Fair Tip #1: Be Prepared

Many of the participants have provided a brief description of their organization. Some have even listed specific positions for which they are recruiting. As you browse through the list, decide which recruiters you would most like to speak with at the fair. Then, do a little background research. You can usually gather basic information on a company’s website. This research is important, because many of them will expect you to have “done your homework.” Even if they aren’t expecting it, demonstrating existing knowledge of the organization shows that you have a real interest in obtaining a position. In other words, it makes you look good and stand out from the crowd.

Career Fair Tip #2: Know How to Work It

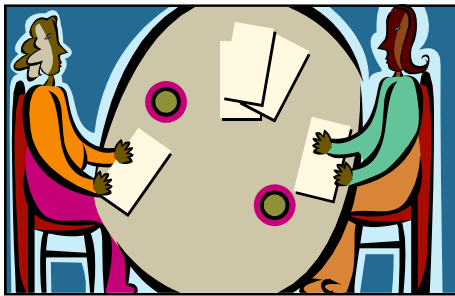
Your success at an event like this depends a lot on how you handle yourself. One of the most important things is to dress appropriately. Business casual is suggested. A suit is perfectly acceptable but not necessary. If you just wander in after class in jeans and a sweatshirt, you might not be taken as seriously as your classmate who took the time to change.



Dressing well can only get you so far. When you arrive, study the map of the room and locate the tables you would like to visit. You could walk around the room once to decide the order in which you’d like to visit them. Then go for it. Make eye contact and introduce yourself with a firm handshake. But then what? Prepare a 1-2 minute “commercial” just telling the recruiter a little bit about yourself. Start with your major and class standing. Then highlight the skills you have that would make you an excellent candidate and why you are interested in their organization/company. Ask a few questions, because curiosity indicates genuine interest.

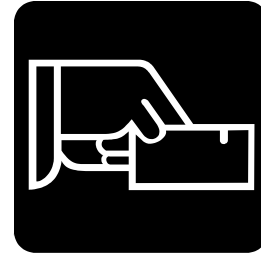


Bring plenty of copies of your resume and keep them in a file folder to stay organized. If your resume has not been updated recently, there are several ways to get it reviewed by our office. You can make an appointment with a counselor or peer advisor by calling 977-2828. We also have walk-in hours M-F from 1-2 p.m. If you cannot get in any other time, we also offer a resume drop-off service. Just swing by anytime during our regular office hours (M-R 8-5:30, F 8-5) and drop it off. One of our staff will look it over and make suggestions and you can usually pick it up in 24-48 hours. Do not wait until the last minute to do this. Sometimes you will have to turn in several drafts before you have a polished resume. As the fair draws closer, we will receive an increased number of resumes. Therefore, you will benefit from coming in early by getting a little more time and attention.



Career Fair Tip #3: Follow-Up

Standing out is important at a large recruitment event such as a career fair. You must understand that these recruiters will probably shake 500 other hands besides yours that day and no matter how impressionable you may think you are, it is the impression you make after the fair that really makes the difference.



Collect business cards and take notes so that when you get home that night, you can write a thank-you-note to the recruiter. Email, typed, or hand-written are all acceptable, and it might be a good idea to include another copy of your resume with the note. As mentioned before, they probably shook 500 other hands that day at the fair and likewise received just as many resumes.

On-Campus Recruiting

Interviews Begin

February 4



Apply Now on eRecruiting

<http://careers.slu.edu>

Spring 2005 Career Fair

Attendees

A.G. Edwards & Sons, Inc.
ABC Supply Co. Inc.
Accredited Home Lenders
ACLU of Eastern Missouri
AFLAC
Alexian Brother Community Services
ALIVE
Americall Group inc.
Anheuser-Busch Companies, Inc.
Aquinas Institute of Technology
Archdiocese of St. Louis
AXA Advisors, LLC
Bassett Furniture Direct
Big Brothers Big Sisters of Eastern Missouri
Boeing
Brebeuf Jesuit Preparatory School
Bridgestone Firestone Retail and Commercial Operations
Business Training Library
Camp Coca-Cola
Carle Foundation Hospital
Catholic Family Services
Centric Group
Children's Advocacy Services of Greater St. Louis
Children's Home & Aid Society of Illinois
Children's Home Society
Christian Hospital
Cintas Corporation
Civil Justice Clinic at Washington University Law School
College Directory Publishing, Inc.
Colliers Turley Martin Tucker
Commerce Bank
COMTREA
County Insurance & Financial Services
Coventry Health
Crime Victim Advocacy Center
Crosby MBA Program
Deaconess Health System
Decatur, Illinois Police Dept.
Department of Social Services
Edgewood Children's Center
Edward Jones
Enterprise Rent-a-Car
Epworth Children & Family Services
Ernst & Young
Express Scripts
Family Court of St. Louis County
Family Support Network
Family Video
FBI
Federated Mutual Insurance Co.
FedEx Ground
Ferguson-Florissant School District
Fifth Third Bank
Forest Institute of Professional Psychology

Fort Zumwalt School District
Girl Scout Council of Greater St. Louis
GMAC Insurance
GradStaff, Inc.
Harrah's Casino & Hotel
Hess Educational Organization -Taiwan
Holy Cross Associates
Hopewell Center
Independence Regional Health Center
Iowa State University
Jacksonville School District #117
Jefferson County Public Administrator's Office
JESS (Jobs and Employment Services)
Judevine Center for Autism
Justine Peterson Housing & Reinvestment
Kansas City University of Medicine and Biosciences
Kaplan Test Prep and Admissions
Kelly Services
KidSmart
Knights Direct
Kozeny & McCubbin
Ladue School District
Life Crisis Services
Logan College of Chiropractic
Lutheran Family and Children's Services
Martha's Hands Home Health
Missouri Alliance for Children & Families
Missouri Botanical Garden
Missouri Dept. of Social Services
Missouri Division of Youth Services
Missouri Lottery
MonsterCommerce
NASW—Missouri Chapter
National Multiple Sclerosis Society
Neiman Marcus
Nestle Purina PetCare
Northwestern Mutual Financial Network
Northwestern Mutual Financial Network
The Hempstead Group
Operation Weed & Seed St. Louis
Places for People, Inc.
Praxair Distribution, Inc.
Pro Motion Inc.
Progressive Youth Connection
Project ARK
Quilogy
Raven
Regional Arts Commission
Renaissance Financial
Ritenour School District
Riverview Gardens School District
Rockwood School District
Rubin, Brown, Gornstein & Co LLP
Saint Louis University
Saint Louis University—MBA & Graduate Business Programs
Saint Louis University School of Law

Saint Louis University School for Professional Studies
Saint Louis University School of Public Health
Saint Louis University School of Social Service
Saint Louis University Young Alumni Association
Sara Lee Baking Group
Sisters of Mercy of the Americas
Social Security Administration
Social Work p.r.n.
Southern Illinois University
Southwest Airlines
Southwest Bank
Special School District
SSM Health Care—St. Louis
St. Anthony's Medical Center
St. Jane's Catholic Family Services
St. John's Mercy Medical Ctr.
St. Louis Association of Community Organizations (SLACO)
St. Louis Christian Chinese Community Service Center
St. Louis County Department of Justice Services
St. Louis County Government
St. Louis Public Schools
St. Louis Crisis Nursery
St. Louis Science Center
Stephen Ministries
Stifel, Nicolaus
Stryker Micro Implants
Swank Motion Pictures
T-Mobile
The City of University City
The Hartford Financial Services Group
The May Department Stores Company
The Rehabilitation Institute of St. Louis
The Salvation Army Harbor Light Center
The University of Kansas Hospital
Tyco Healthcare / Mallinckrodt
U.S. Army Audit Agency
U.S. District Court
U.S. Peace Corps
U.S. Probation Office
United States Marine Corps
University of Missouri—Columbia
US Airways Express / PSA Airlines
U.S. Navy Officer Programs
Webster University
Weekends Only
Wells Fargo Financial
Yellow Transportation, Inc.
Youth in Need
Youth Villages
YWCA
And More!
Complete listing at <http://careers.slu.edu>