

Career Chronicles

VOLUME II, ISSUE VII

MARCH 2003

Health Care Career Fair 2003

By: Sara Ramos, Employment Coordinator

On Thursday, March 27, 2003, from 3:00 p.m. - 6:00 p.m., Career Services will host Saint Louis University's Health Care Career Fair 2003 in the Allied Health Building's Multipurpose Room. Primarily geared toward students enrolled in health-related disciplines, the fair will feature employers from a wide range of healthcare organizations. Students searching for full-time, post-graduate employment and those looking to network with potential employers will find a variety of resources at this year's fair.

Both local and regional organizations are scheduled to attend Health Care Career Fair 2003. Among the registered organizations are the American Red Cross, Lutheran Senior Services, Missouri Baptist Hospital, Saint Louis

University School of Public Health, Select Rehabilitation, Tenet Saint Louis, and the U.S. Naval Reserve. A full list of participating organizations is available on the Career Services website: careers.slu.edu.

Career Services' counselor for students in the School of Allied Health Professions, the School of Nursing, and the Communication Sciences and Disorders Program, Kevin Allan, is available to help students prepare for the upcoming fair. To arrange an appointment with Kevin on the Frost campus, call Career Services at 977.2828. To make an appointment to meet with Kevin during his office hours on the Health Sciences campus (School of Nursing, Room 410), please email Kevin at allankl@slu.edu.

INSIDE THIS ISSUE:

Health Care Career Fair	1
Ask Tyler	1
Quick Tip	1
Some Bright Career Ideas...	2
Register for eRecruiting	2

Quick Tip

- Top Qualities/
Skills Employers Seek
1. Communication skills
 2. Honesty/integrity
 3. Teamwork skills
 4. Interpersonal skills
 5. Motivation/initiative
 6. Strong work ethic
 7. Analytical skills
 8. Flexibility/adaptability
 9. Computer skills
 10. Organizational skills

Ask Tyler-

A question/
answer column
responding to all
your career
inquiries.

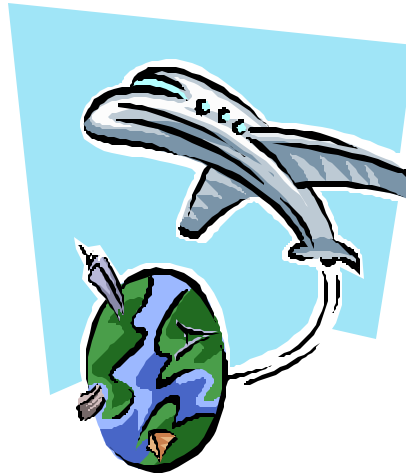
Q: What should I include for the education section on my resume?
-Dan, Junior

A: The education section should include your degree, major, date of graduation, university, and city and state of university location. Overall grade point average can be included if it is 3.0 or higher. Minors or area of concentration can also be included. If you attended more than one university, only the university from which you obtained a degree need to be included. Multiple degrees should be listed in reverse chronological order.

To submit a question, email Tyler at cutrobt@slu.edu

Some Bright Career Ideas From Career Pro News Weekly

Kep Watch on the Skies: With many current air traffic controllers set to retire, there is an urgent need for new recruits to take their place. There are growing opportunities for air traffic controllers to keep our skies safe. Read the exclusive feature from Bridges.com. <http://careerpronews.com/explorer/browse/op/airtraff/main.htm>.



get home, too. Read the exclusive feature from Bridges.com.

<http://careerpronews.com/explorer/browse/et/workabro/main.htm>.

A World of Opportunity: There are lots of opportunities to find work abroad -- you could teach English in Japan or work as a cook in Australia, for example. The skills you develop can help you when you

in a different location. For more information, see [ocregister.com](http://www2.ocregister.com).

<http://www2.ocregister.com/ocrweb/ocr/>.

Feeling Career Pressure: With the activation of tens of thousands of military reservists, both employers and reservists are concerned about the workplace gaps. Reservists may have a job when they return, but some are worried it might be a different one and could even be



Register with eRecruiting at our online website and take advantage of all eRecruiting has to offer. Click on "students" in the eRecruiting box and fill in the required information. Let eRecruiting and Career Services be your path to success!

<http://www.slu.edu/services/cc/erecruitstudentform.html>



Career Services > Saint Louis University
 3840 Lindell > Academic Resource Center
 Suite 110 > St. Louis, MO > 63108

Editor: Brent T. Cutro

E-mail: careers@slu.edu
 Web: <http://careers.slu.edu>

><
 Phone: 314.977.2828
 Fax: 314.977.3486